

SG 38 Schulgleiter / ŠK-38 Komár



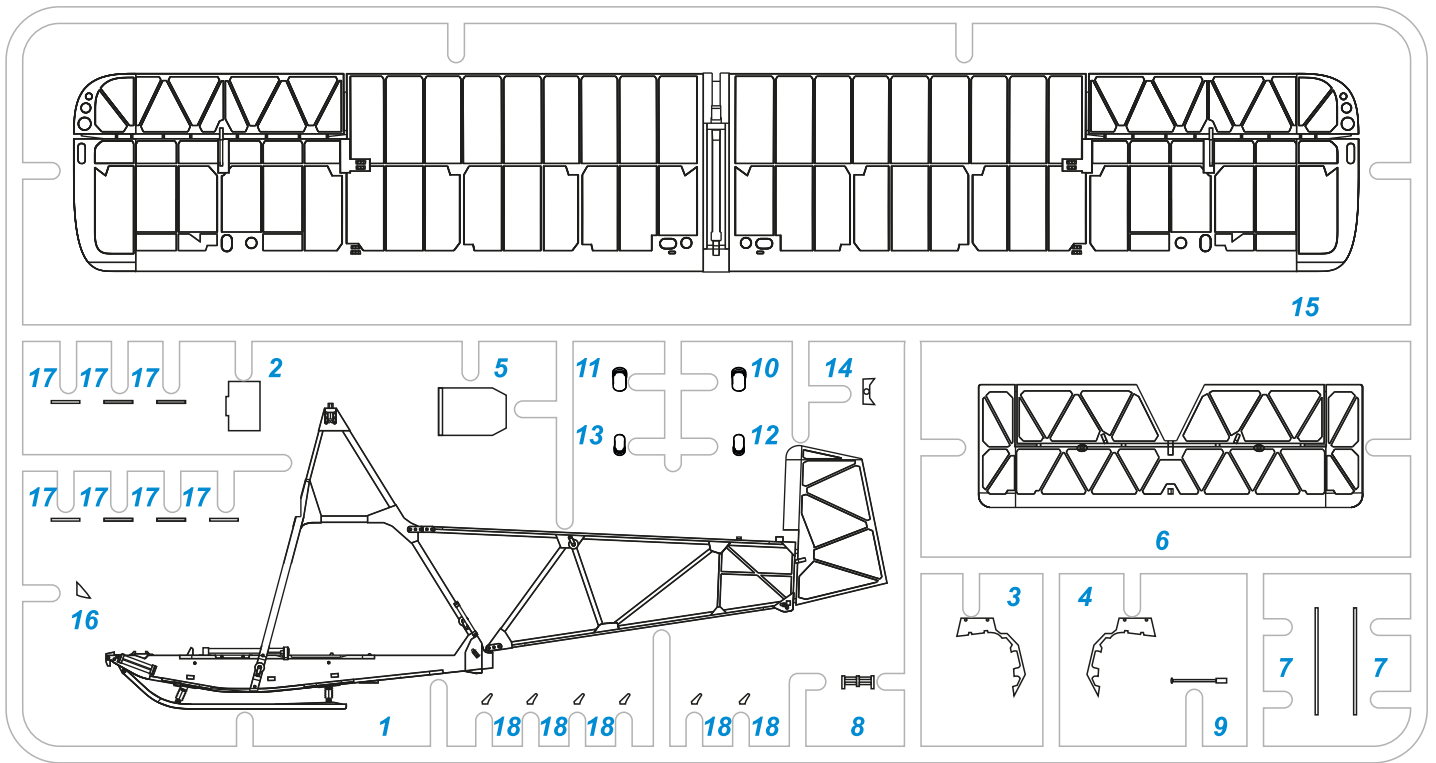
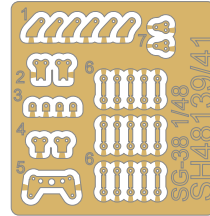
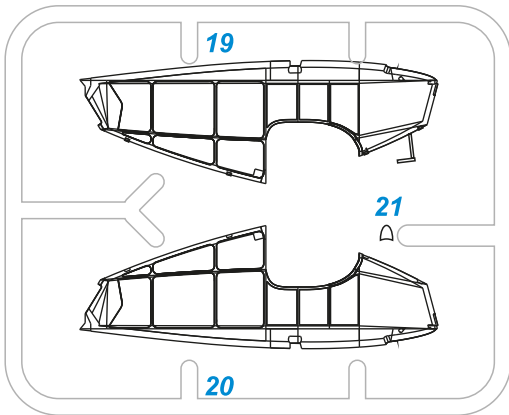
When the SG-38 elementary training glider was designed by Rehberg, Schneider and Hoffmann, its constructors could not have guessed just how famous it would become. This glider very soon became a standard training machine for the NSFK which was mass produced by several factories and it could also be home-built from drawings sent by post. Production was not restricted solely to Germany either and the basic design went on to be built throughout the world, making it the most widely used training glider ever known. The type was built within most European countries under a variety of different designations and amongst them was Slovakia which began production during WW2 and in post war years they continued to be built for aeroclubs in Czechoslovakia as the ŠK-38 Komar (Gnat) where they were used alongside some original ex-German SG-38 aircraft.

Wingspan: 10,40 m, Length: 6,28 m, Empty weight: 100 kg, Max. speed: 115 km/h, Max. glide ratio: 10:1 at 52 km/h



Když pánové Rehberg, Schneider a Hoffmann navrhli kluzák pro základní výcvik SG-38 Schulgleiter, jistě netušili, jak slavný letoun stvořili. Kluzák se totiž brzy stal standardním kluzákem pro NSFK a byl vyráběn jak amatérsky podle zasílaných plánů, tak sériově v několika továrnách. A to jak v Německu, tak i v jiných státech, např.za války na Slovensku. Dalo by se říci, že minimálně v Evropě ho snad postavili úplně všude. Stal se nejmasověji vyrobeným školním kluzákem světa. Po druhé světové válce byla vyrobena série SG-38 s označením ŠK-38 Komár i pro československé aerokluby. Tyto nově vyrobené kluzáky pak u nás sloužily společně s kořistními. Kořistní kluzáky používali po válce i v Polsku, Francii, a jinde v Evropě.

rozpětí: 10,40 m, délka: 6,28 m, prázdná váha: 100 kg, max. rychlost: 115 km/h, max. klouzavost: 10:1 při 52 km/h



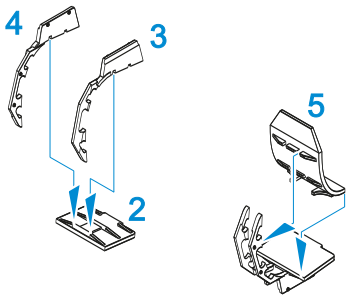
Barvy GUNZE/ GUNZE Colour No.

A Bílá/ White	H1/C1	E Plátno/ Fabric	H27/C44	I RLM 83 Zelená/ RLM 83 Green	H423/C423
B Červená/ Red	H3/C3	F Barva dřeva/ Wood	H66/C119	J Tmavý kov/ Dark Metal	MC214
C Modrá/ Blue	H5/C5	H Černá na pneu./ Tire Black	H77/C137	K Hliník/ Aluminium	MC218
D Černá/ Black	H12/C33				

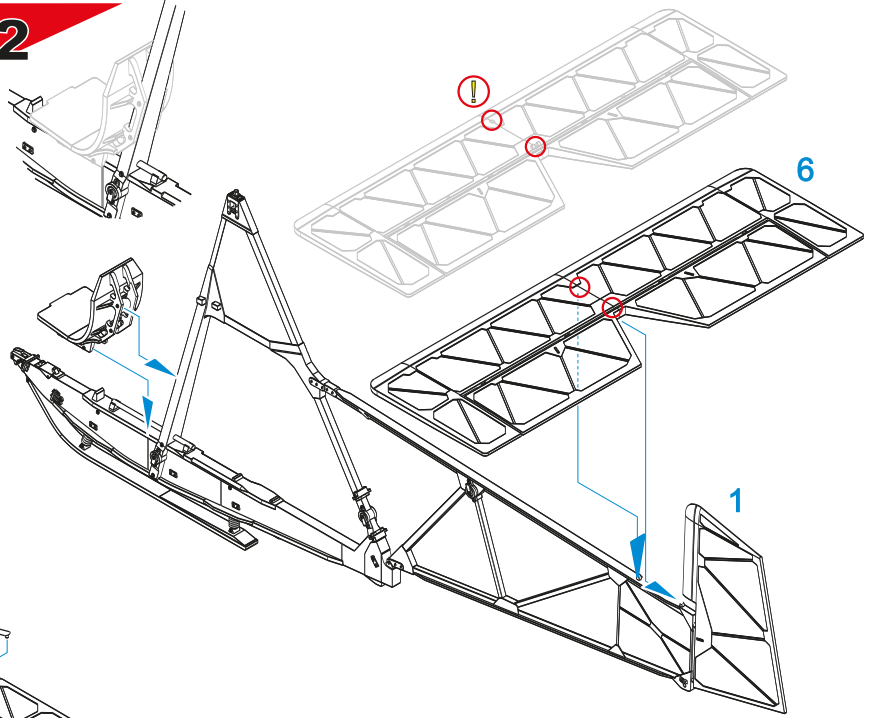
SYMBOLS

MOŽNOST VOLBY OPTIONAL NACH BELIEBEN OPTION	POUŽIT KYANOAKRYLÁTOVÉ LEPIDLO INSTANT CYANOACRYLATE GLUE ZYANOAKRYLATKLEBER ADHÉSIF CYANOACRYLAT	OHNOUT BEND BIEGEN COURBER	ZHOTOVIT NOVĚ SCRATCH BUILD FERTIGSTELLEN ACHEVER	ŘEZAT/VRTAT CUT OFF/DRILL ENTFERNEN DETACHER	GSI A colours code NATRÍT COLOUR FARBEN PEINDRE
--	--	-------------------------------------	--	---	---

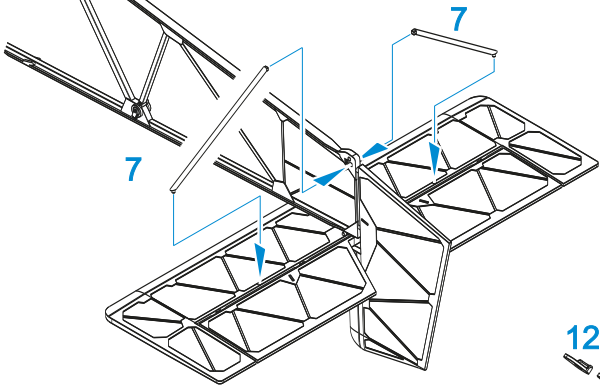
1



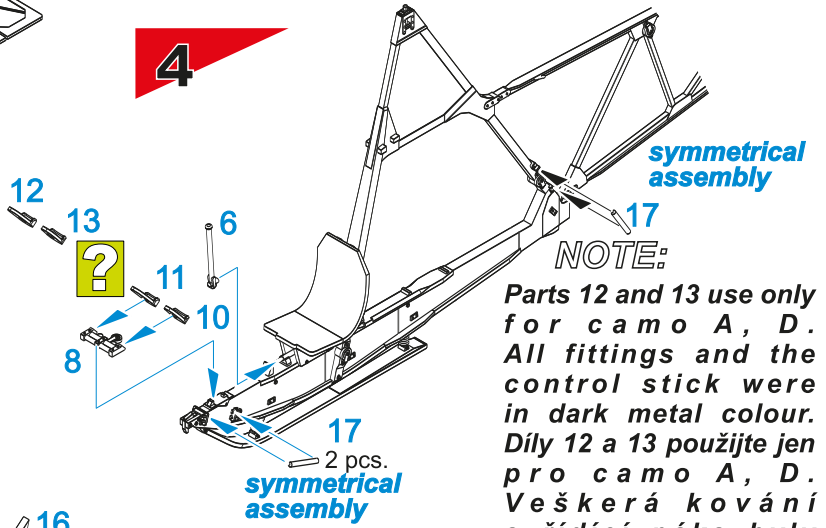
2



3



4

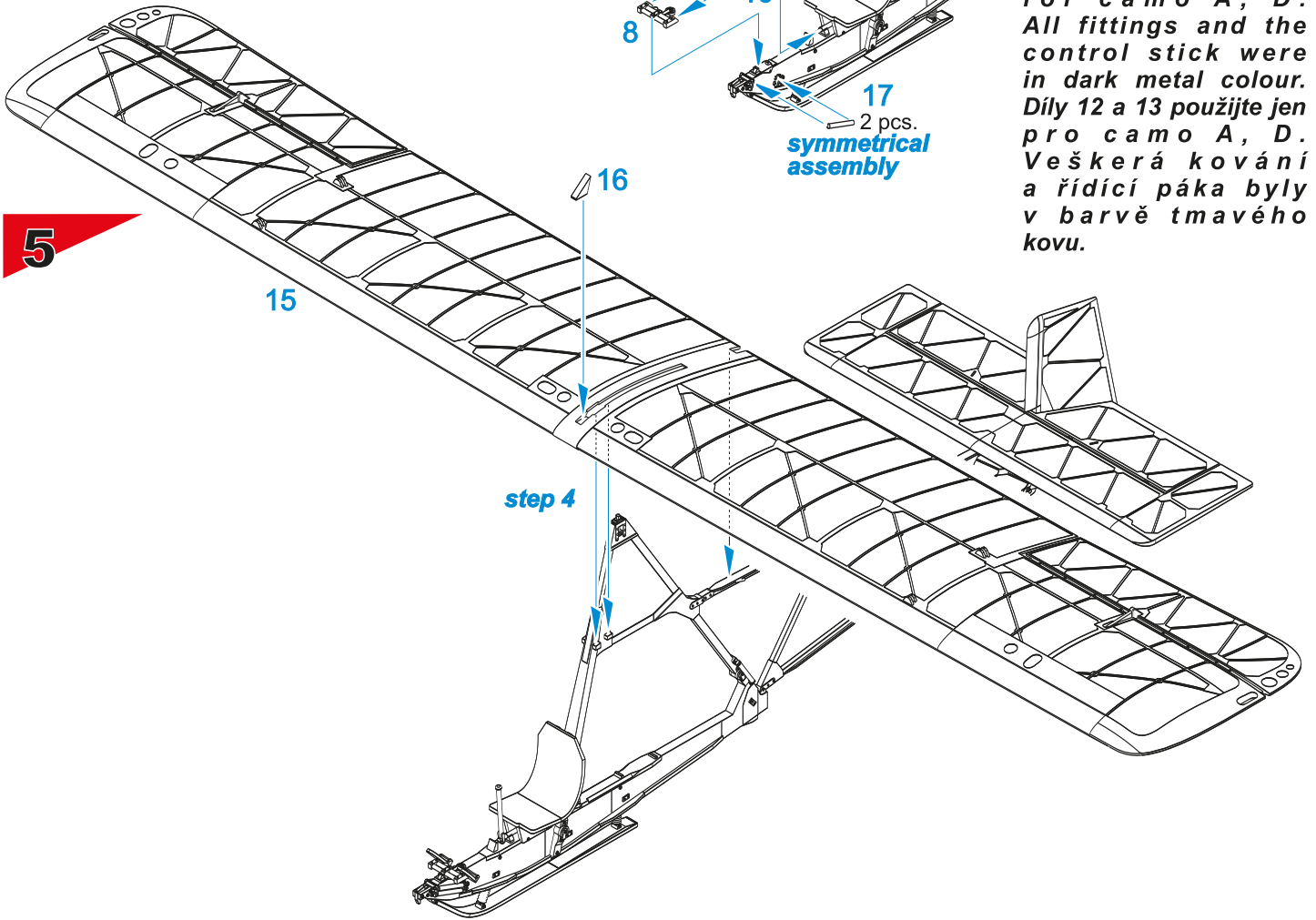


symmetrical assembly

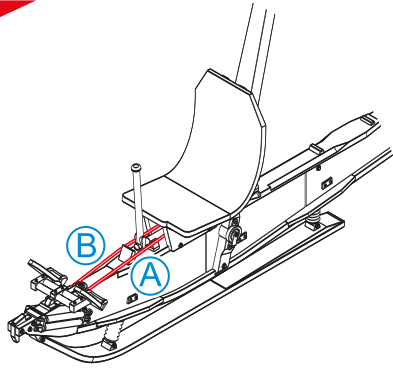
NOTE:

Parts 12 and 13 use only for camo A, D. All fittings and the control stick were in dark metal colour. Díly 12 a 13 použijte jen pro camo A, D. Veškerá kování a řídicí páka byly v barvě tmavého kovu.

5



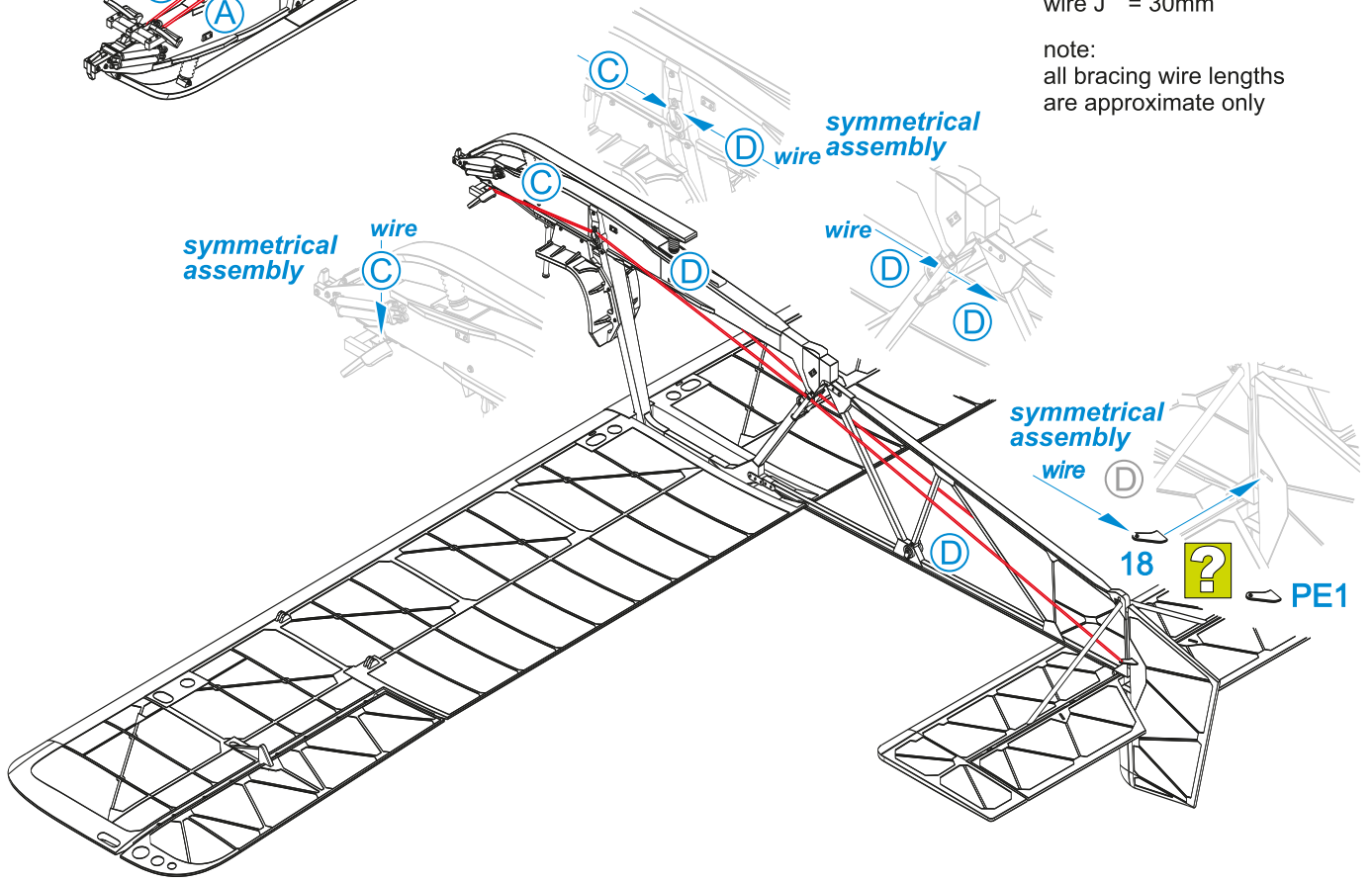
6



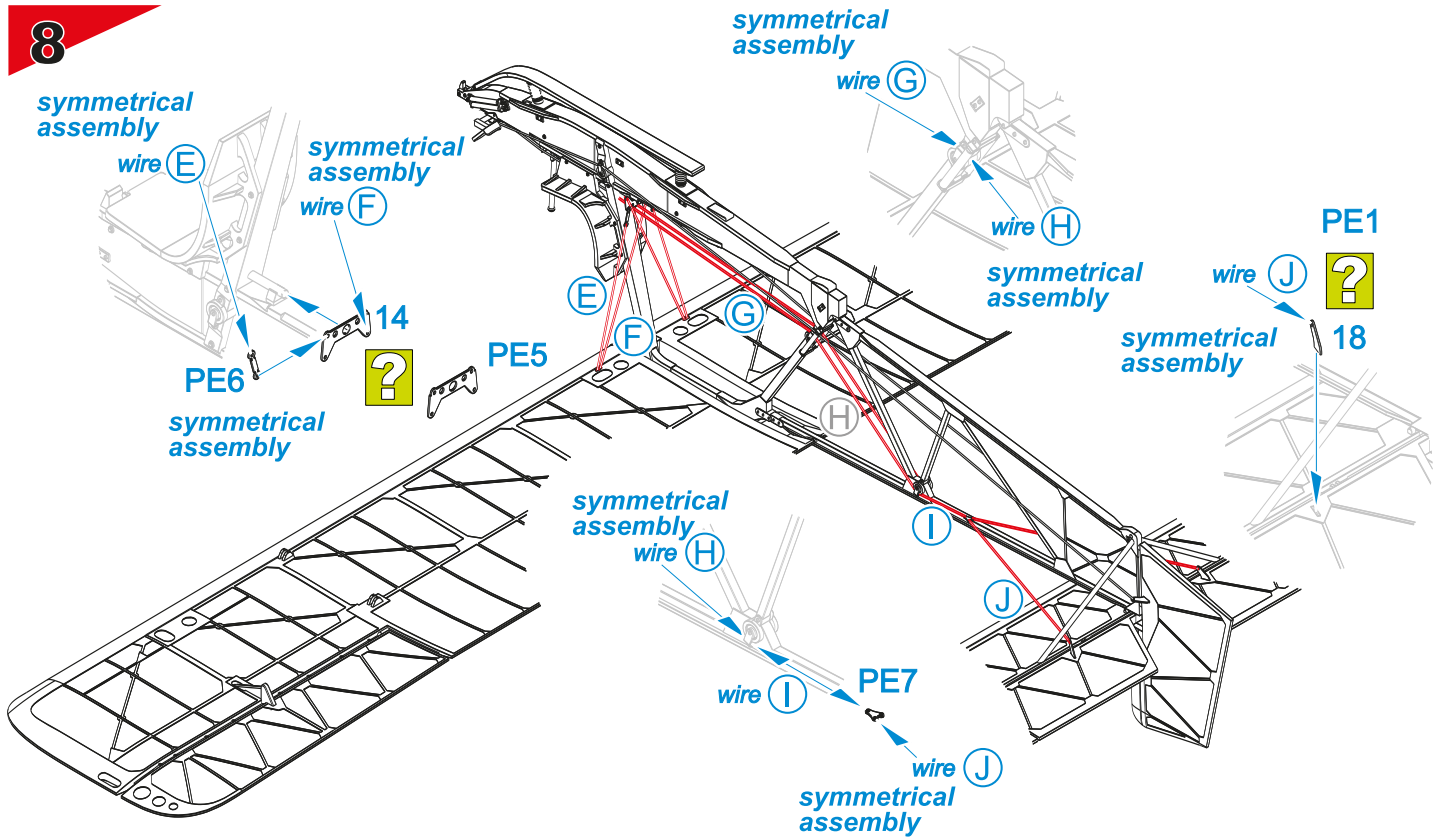
7

- wire A = 20mm
- wire B = 20mm
- wire C = 19mm
- wire D = 93mm
- wire E = 20mm
- wire F = 24mm
- wire G = 33mm
- wire H = 23mm
- wire I = 8mm
- wire J = 30mm

note:
all bracing wire lengths
are approximate only



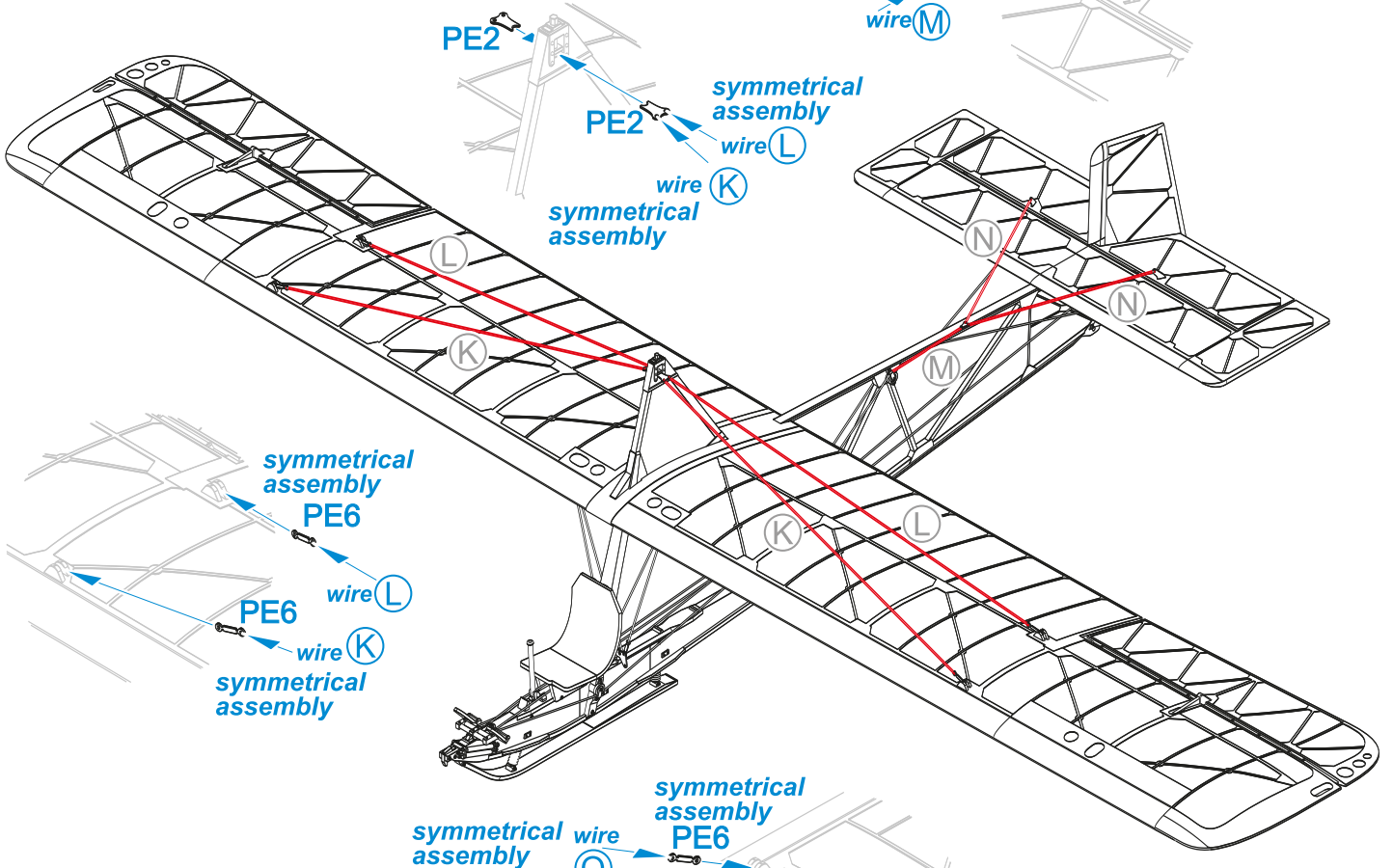
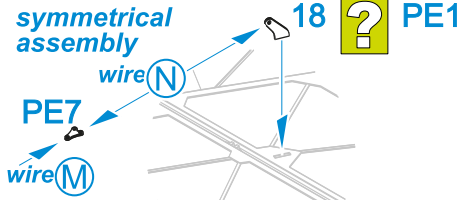
8



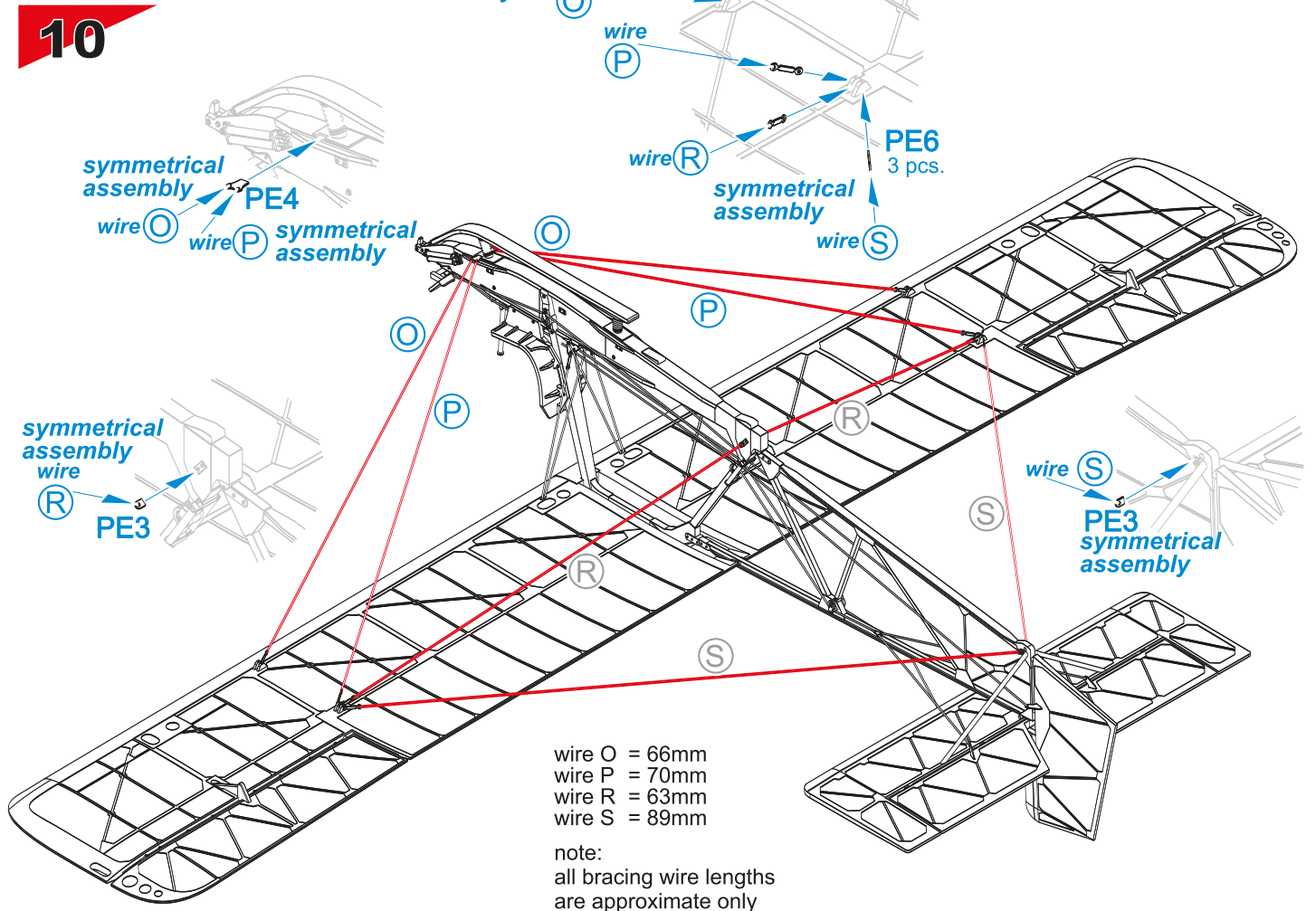
9

wire K = 59mm
wire L = 59mm
wire M = 13mm
wire N = 25mm

note:
all bracing wire lengths
are approximate only

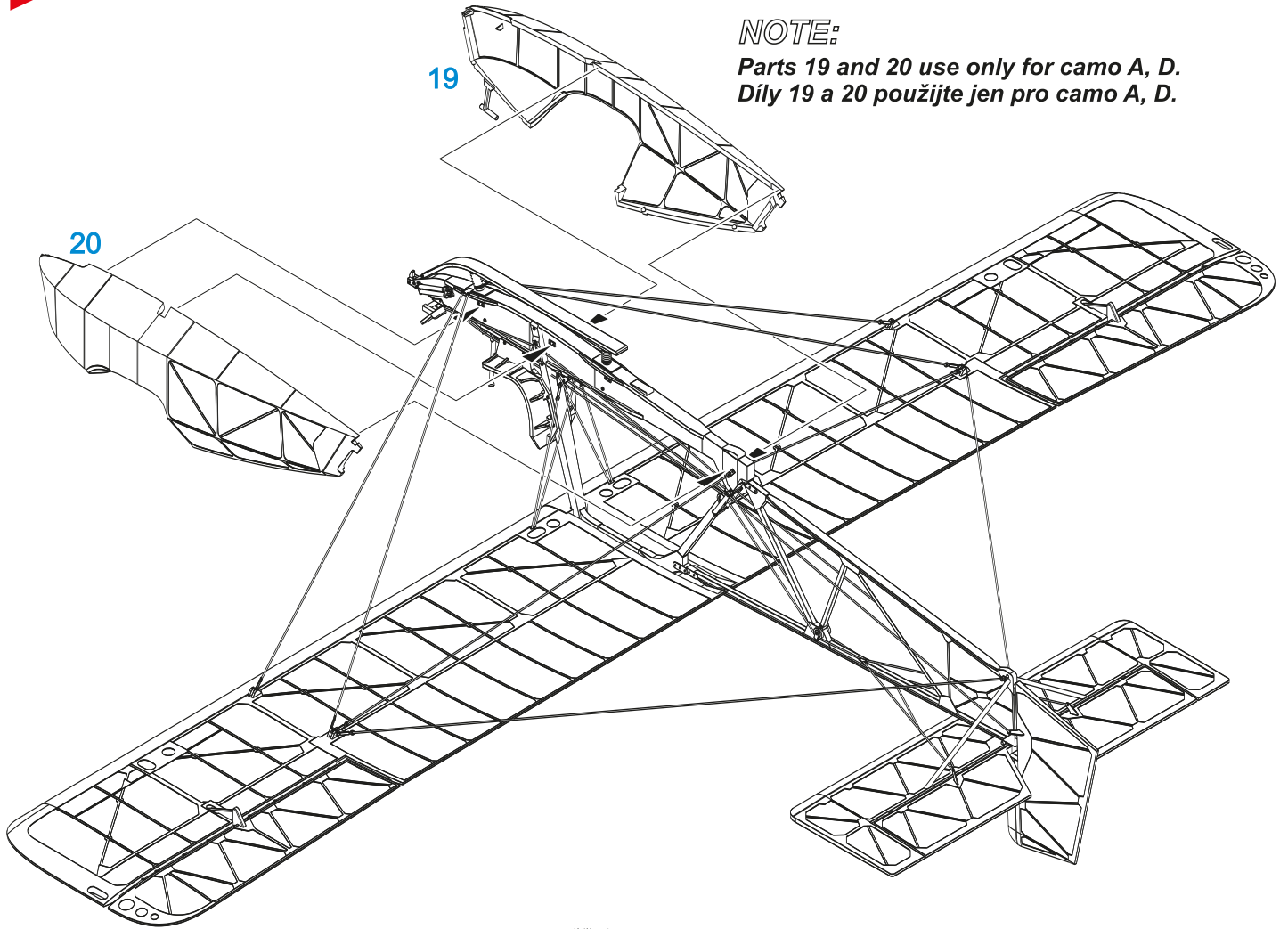


10

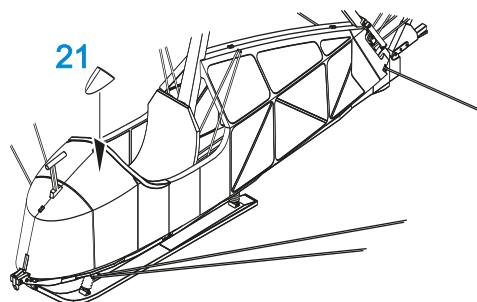
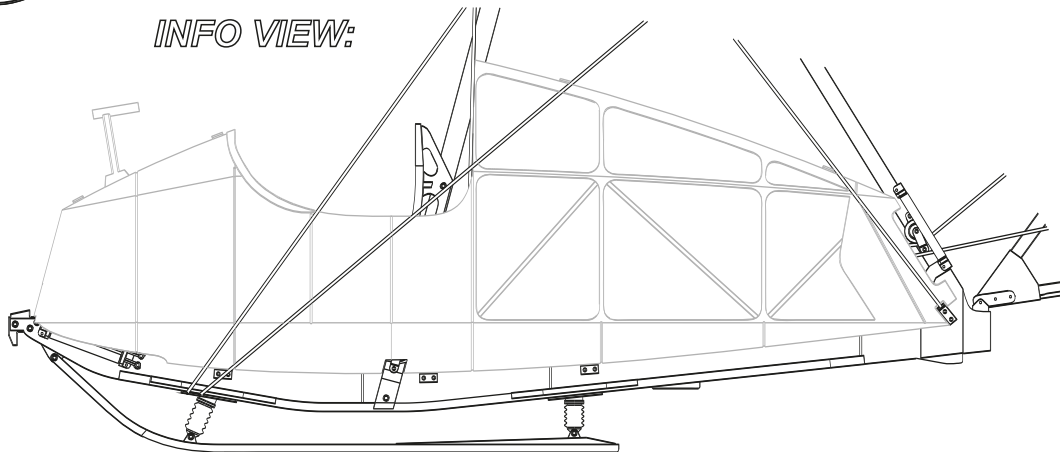


NOTE:

Parts 19 and 20 use only for camo A, D.
 Díly 19 a 20 použijte jen pro camo A, D.



INFO VIEW:



CMK sets for your Reggiane Re.2005



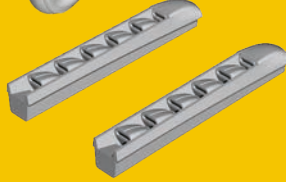
Q48364
Reggiane Re 2005
Main Wheels



Q48365
Reggiane
Re 2005 Tailwheel with
Strengthened Leg



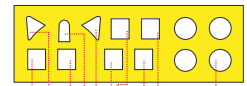
Q48366
Reggiane Re 2005
Supercharger Air Intake



Q48367
Reggiane Re 2005
Exhausts

special MASK M48002

M48002 Reggiane Re. 2005 1/48
for Special Hobby kit



CP2



C29/30/31/32

© Special Hobby 2020 www.specialhobby.eu Made in the Czech Republic



SH48208 1/48

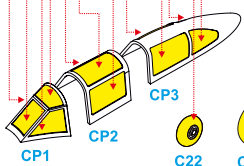
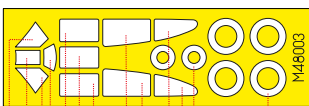
J-20/Héja I 'Re.2000 Export Birds'

SH48204 1/48
Reggiane
Re.2000 Serie I



special MASK M48003

M48003 Reggiane Re.2000 1/48
for Special Hobby kit



CP1

CP2

CP3

C22

C8/C7

© Special Hobby 2020 www.specialhobby.eu Made in the Czech Republic



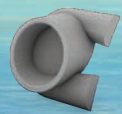
For Re.2000 we also offer:



Q48374
Reggiane Re 2000
Headrest



Q48372
Reggiane Re 2000
Tailwheel with
Strengthened Leg



Q48373
Reggiane
Re 2000 Exhausts



Q48371
Reggiane Re 2000
Main Wheels

special HOBBY

facebook.com/specialhobby

WWW.SPECIALHOBBY.EU | WWW.CMKKITS.COM

CMK
CZECH MASTER'S KITS

ATTRACTIVE 1/48 SCALE MODELS & SETS



SH48148
SAAB AJ 37 Viggen 'Attack Version'



SH48150
SAAB SK-37E Stör-Viggen
'Electronic Warfare Agressor'

CMK resin sets for Viggen

129-4310

Bofors m/70
Rocket Pod (2 pcs.)

129-Q48219

SAAB 37 Viggen
Ejection Seat

129-Q48220

AAB 37 Viggen
Air Brakes Set

129-Q48221

SAAB 37
Viggen Wheels

129-Q48222

SAAB 37 Viggen
Thrust Reverser

129-4361

AJ-37/SF-37/SH37 Viggen
Canard Correction Set

129-4362

JA-37 Viggen
Canard Correction Set



129-8054
MA-1A USAF Start Cart /RESIN KIT/



129-8058
MD-3 Ground Power Unit /RESIN KIT/



129-F48103
Vietnam LRRP US
Helicopter crew (2 fig.)



129-4268
MD-500E/OH-6DA
Conversion set for Hasegawa kit



129-4275
MH-6E/J/M Little Bird
Conversion set for Academy kit



129-4276
AH-6F/J Attack version
Conversion set for Academy kit