

Q48397
1/48
DH Chipmunk T.10
Main Wheels
for Airfix kit

PUR - Polyurethane
parts



PUR1

PUR2

© Special Hobby 2021

Díly ohnuté popř. pokroucené vlivem teplotních změn a stárnutí materiálu, mohou být narovnány do požadovaného tvaru pomocí proudu teplé vody nebo vzduchu (fén na vlasy). K lepení použít kyanokrylátové lepidlo! Kontaktní plochy doporučujeme před lepením odmastit. Různé drátky a tyčinky nejsou přiloženy.

Parts slightly distorted and bent owing to temperature changes or due to material aging can be straightened to requested shape by hot water or hot air jet (hair dryer). This process can be repeated till result is entirely satisfactory. For best result use cyanoacrylate glue! Ungreasing contact areas is recommended before gluing. Wires and rods not included.

www.cmkkits.com
www.specialhobby.eu
www.facebook.com/specialhobby/

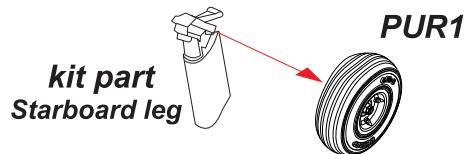
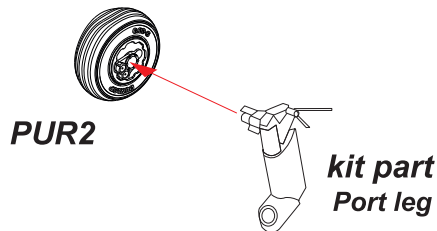


CMK H1010

The Razor Saw with Handle (cat. n. H1010)
 is a great tool for cutting both plastic and resin.
 CMK also offers a wide variety
 of coarse / medium / fine saws.

and more at www.specialhobby.eu

Special Hobby, Mezileš 718, Praha 9, 193 00, Czech Republic
 e-mail: office@specialhobby.eu



Interesting 1/48 Tiger Moth sets (for Airfix kit)
by CMK line:

129-4407
DH.82 Tiger Moth
Cockpit
Correction
Set

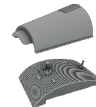


129-4412
DH.82 Tiger Moth
Cockpit Entry
Hatches (4pcs, open)

129-4409
DH.82 Tiger Moth
Luggage Box

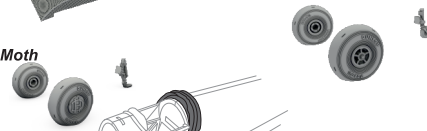


129-4410
DH.82
Tiger Moth
Exterior Set

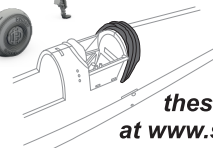


129-4413
DH.82 Tiger Moth
Mainwheels
and Tailwheel

129-4411
DH.82 Tiger Moth
Mainwheels
and Tailskid



129-Q48382
DH.82 Tiger Moth
Blind Flying Hood



you can find
these and other sets
at www.specialhobby.eu