

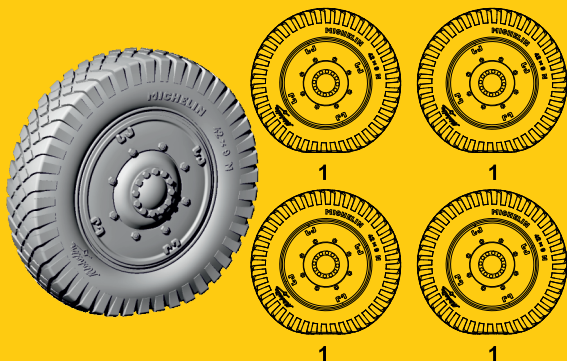
3146
1/35

Panhard 178/AMD-35 Wheels

for ICM/Revell/Tamiya kits

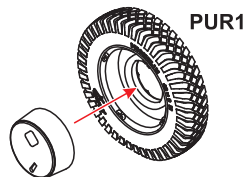


PUR - Polyurethane parts



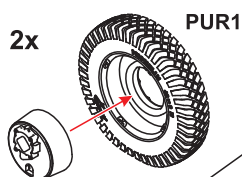
© Special Hobby 2021

krok 33 v návodu stavěbnice
step 33 in kit instructions (ICM kit)



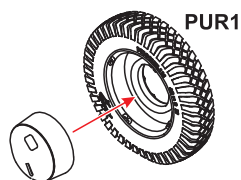
díl stavěbnice E-4
kit part E-4

krok 34 v návodu stavěbnice
step 34 in kit instructions (ICM kit)

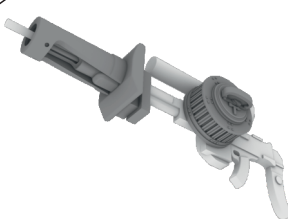


díl stavěbnice E-1
kit part E-1

krok 36 v návodu stavěbnice
step 36 in kit instructions (ICM kit)



díl stavěbnice E-3
kit part E-3



Díly ohnuté popř. pokroucené vlivem teplotních změn a stárnutí materiálu, mohou být narovnané do požadovaného tvaru pomocí proudu teplé vody nebo vzduchu (fén na vlasy). K lepení použít kyanoakrylátové lepidlo! Kontaktní plochy doporučujeme před lepením odmastit. Různé drátky a tyčinky nejsou přiloženy.

Parts slightly distorted and bent owing to temperature changes or due to material aging can be straightened to requested shape by hot water or hot air jet (hair dryer). This process can be repeated till result is entirely satisfactory. For best result use cyanoacrylate glue! Ungreasing contact areas is recommended before gluing. Wires and rods not included.

www.cmkkits.com
www.specialhobby.eu
www.facebook.com/specialhobby/



CMK H1010

The Razor Saw with Handle (cat. n. H1010)
is a great tool for cutting both plastic and resin.

CMK also offers a wide variety
of coarse / medium / fine saws.

Special Hobby, Mezileší 718, Praha 9, 193 00, Czech Republic
e-mail: office@specialhobby.eu

Special Hobby offers in the CMK line
3147 Panhard 178/AMD-35 Armament
and Ammunition Set

