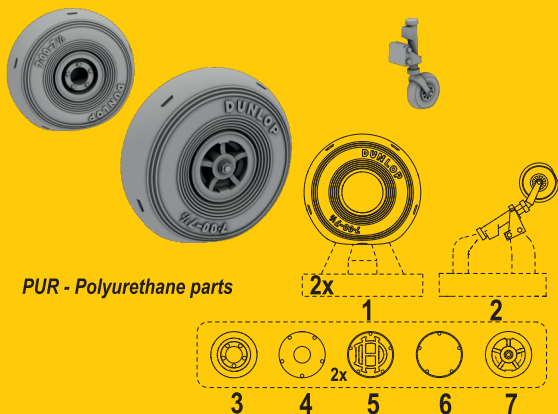


**4413 DH.82 Tiger Moth**  
**1/48 Mainwheels and Tailskid w/ Wheel**  
*set for Airfix*



PUR - Polyurethane parts

Díly ohnuté popř. pokroucené vlivem teplotních změn a stárnutí materiálu, mohou být narovnaný do požadovaného tvaru pomocí proudu teplé vody nebo vzduchu (fén na vlasy).

*Parts slightly distorted and bent owing to temperature changes or due to material ageing can be straightened to requested shape by hot water or hot air jet. (hair dryer)*

*This process can be repeated till result is entirely satisfactory.*

*K lepení použít kyanoakrylátové lepidlo!  
 For best result gluing use cyanoacrylate glue!*

*Kontaktní plochy doporučujeme před lepením odmastit  
 Contact areas ungrease is recommended before gluing.*

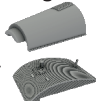
**Visit our official website and e-shop at**  
**www.cmkkits.com**

**www.specialhobby.eu**

**www.facebook.com/specialhobby/**

**for 1/48 Tiger Moth we also offer:**

**129-4410**  
 DH.82  
 Tiger Moth  
 Exterior Set



**129-4407**  
 DH.82 Tiger Moth  
 Cockpit  
 Correction  
 Set



**129-4409**  
 DH.82 Tiger Moth  
 Luggage Box



**129-4412**  
 DH.82 Tiger Moth  
 Cockpit Entry  
 Hatches (4pcs. optional)  
**and other sets ...**



Special Hobby, Mezilesí 718, Praha 9, 193 00, Czech Republic  
 e-mail: office@specialhobby.eu

