

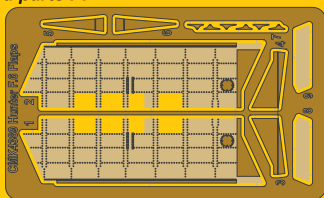
**4389 Hawker Hunter F.6
1/48 Flaps
set for Airfix kit**



Polyurethane parts PUR



Photoetched parts PP



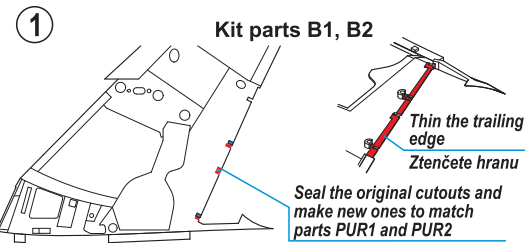
Díly ohnuté popř. pokroucené vlivem teplotních změn a stárnutí materiálu, mohou být narovnaný do požadovaného tvaru pomocí proudu teplé vody nebo vzduchu (fén na vlasy). Různé drátky a tyčinky nejsou přiloženy. K lepení použijte kyanoakralátové lepidlo. Kontaktní plochy doporučujeme před lepením odmastit.

Parts slightly distorted and bended owing to temperature changes or due to material ageing can be straightened to requested shape by hot water or hot air jet (hair dryer). Wires and rods not included. For best results gluing use cyanoacrylate glue. Contact areas ungrease is recommended before gluing

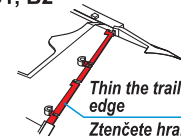
Visit our official website and e-shop at
www.cmkkits.com
www.specialhobby.eu
www.facebook.com/specialhobby/

OTHER SETS / OSTATNÍ SETY 1/48

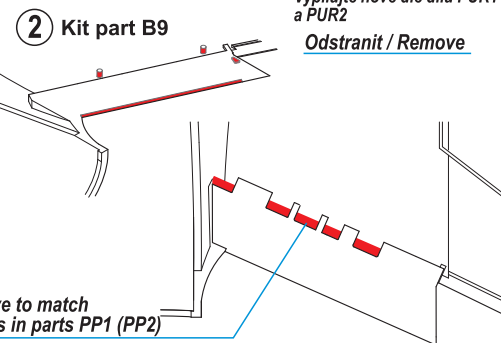
- 4392 Hawker Hunter F.6 Wheels set for Airfix kit
- 4390 Hawker Hunter F.6A/FGA.9 Flaps set for Airfix
- 4388 Hawker Hunter F.6 Undercarriage set for Airfix kit
- 4387 Hawker Hunter F.6 Cockpit set for Airfix kit
- 4348 BAC Lightning F2A/F6 electronics set for Airfix
- 4350 BAC Lightning F2/F2A/F3/F6 Cockpit Set
- 4349 BAC Lightning F2A/F6 Control Surfaces Set
- 4348 BAC Lightning F2A/F6 1/48 Engine Set for Airfix
- 4347 BAC Lightning F1/F1A 1/48 Cockpit Set for Airfix
- 4346 BAC Lightning F1/F1A/ F2/ F3 Control Surfaces Set
- 4345 BAC Lightning Main Undercarriage Bays Set
- 4344 BAC Lightning Front Undercarriage Bay Set
- 4343 BAC Lightning Air Brakes Set for Airfix kit



Kit parts B1, B2



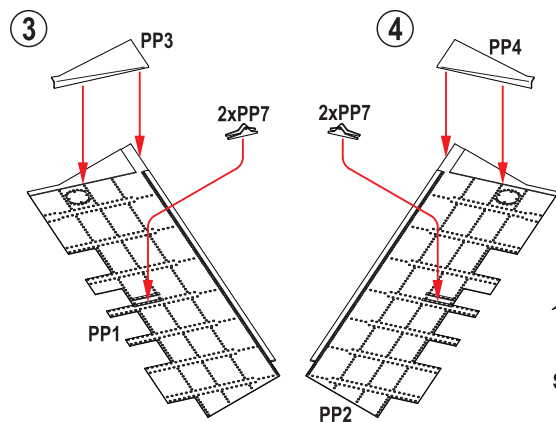
Seal the original cutouts and make new ones to match parts PUR1 and PUR2
Zaslepte původní výřezy. Vypilujte nové dle dílů PUR1 a PUR2



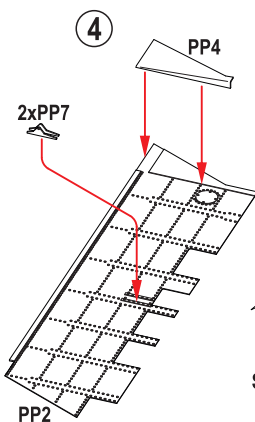
Kit part B9

Odstranit / Remove

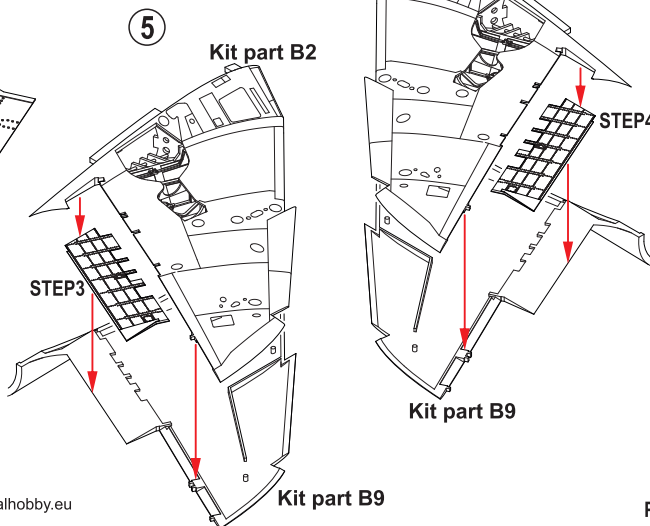
Remove to match cutouts in parts PP1 (PP2)
Upravte dle dílů PP1 a PP2



3

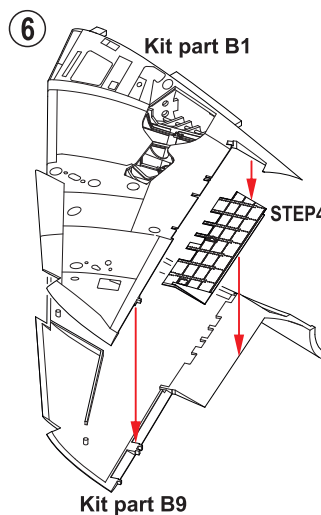


4



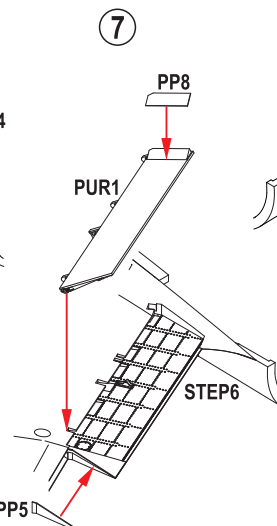
5

Kit part B2



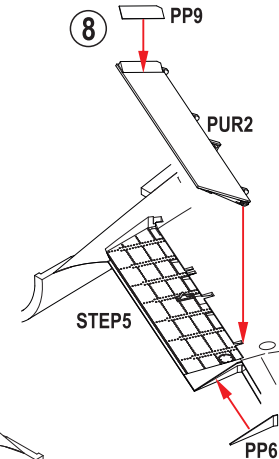
6

Kit part B1



7

PUR1



8

PP9

PUR2

STEP5

PP6